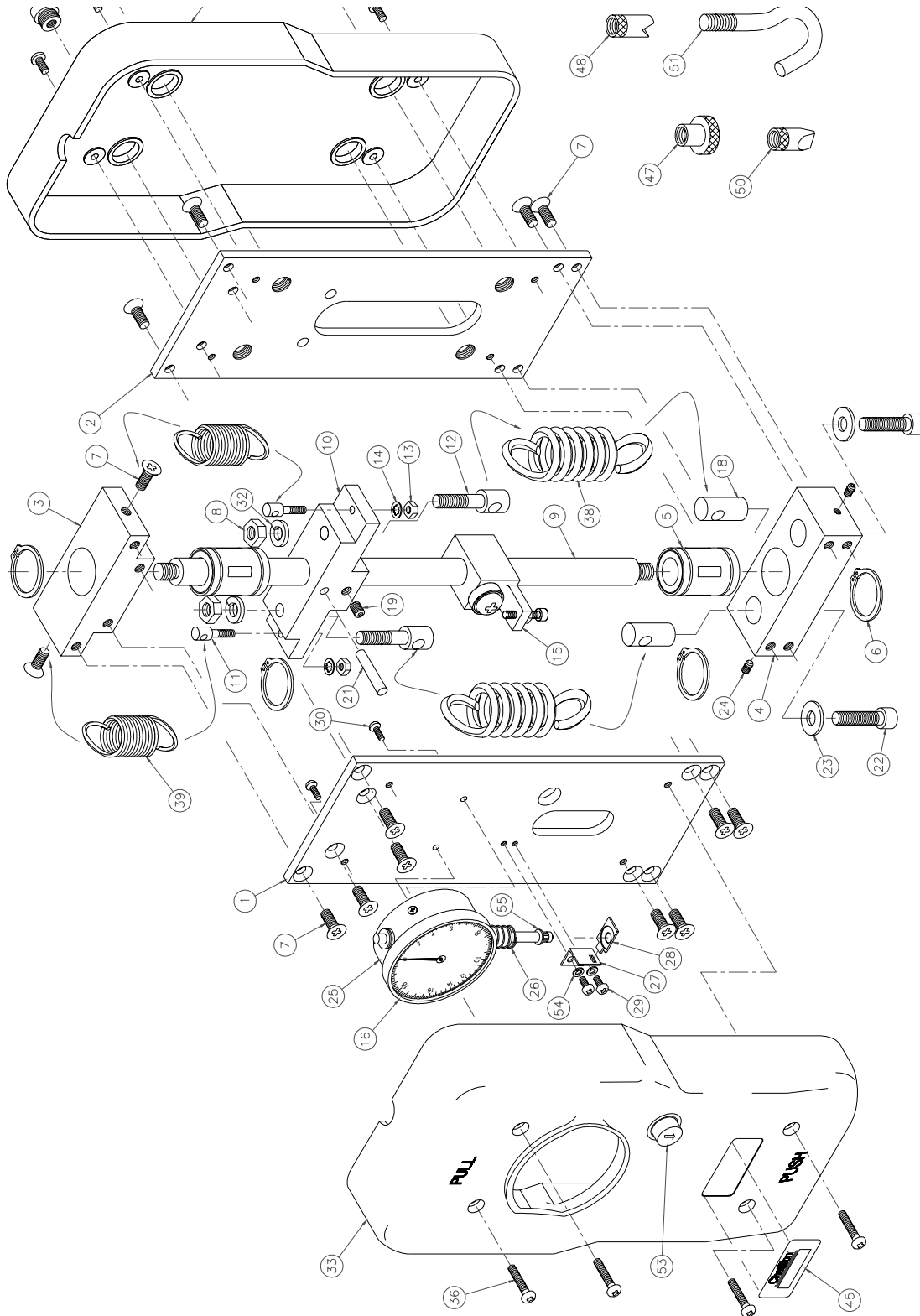


PL-FM-3002-0205

May 2003

Issue 1

Model DG Series Parts Listing



Model DG Series Parts Listing With Decimal Dial (LBF)

US List Price	Ref. No.	Part No.	Description	DG 200	DG 300	DG 400	DG 500
	1	NC002689	Support Plate, Upper	1	1	1	1
	2	NC002690	Support Plate, Lower	1	1	1	1
	3	NC002681	Frame Support, Upper	1	1	1	1
	4	NC002680	Frame Support, Lower	1	1	1	1
	5	910-04-001	Ball Bushing	2	2	2	2
	6	900-46-010	Retaining Ring	4	4	4	4
	7	21047	Screw, #10-32 x 1/2 FH	18	18	18	18
	8	7970	Nut, 1/4-20 Hex	2	2	2	2
	9	NC002685	Shaft, Main	1	1	1	1
	10	NC002684	Calibrator	1	1	1	1
	11	NC002663	Spring Support, Medium	2	2	2	2
	12	NC002682	Spring Support, Large	2	2	2	2
	13	3168	Nut, #6 Hex	2	2	2	2
	14	10390	Washer, #6 Lock	2	2	2	2
	15	NC002738	Bearing Support Assembly	1	1	1	1
	16	NC002716	Bezel, Dial Indicator	1	1	1	1
	17	N/A					
	18	NC002692	Spring Support, Calibrator	2	2	2	2
	19	3127	Screw, Set #10-32 x 1/4	1	1	1	1
	20	N/A					
	21	NC002688	Taper, Pin #2 x 1	1	1	1	1
	22	01-90038	Screw, 1/4-28 x 1 SHC	2	2	2	2
	23	900-30-021	Washer, 1/4 Flat	2	2	2	2
	24	900-08-023	Screw, Set #6-32 x 1/4	2	2	2	2
	25	NC002677-09	Dial Indicator Assembly	1	-	-	-
		NC002677-10	Dial Indicator Assembly	-	1	-	-
		NC002677-11	Dial Indicator Assembly	-	-	1	-
		NC002677-12	Dial Indicator Assembly	-	-	-	1
	26	NC002674	Spring, Compression	1	1	1	1
	27	NC002672	Bracket, Max Capture	1	1	1	1
	28	NC002673	Plate, Max Capture	1	1	1	1
	29	E08-241	Screw, #4-40 x 3/16 PH	2	2	2	2
	30	E08-252	Screw, #4-4 x 5/16 RD	2	2	2	2
	31	NC002691	Threaded Bushing	4	4	4	4
	32	9766	Washer, Lock 1/4 ID	2	2	2	2
	33	NC002730	Housing, Top	1	1	1	1
	34	NC002731	Housing, Bottom	1	1	1	1
	35	03-90041	Screw, #6-32 x 5/16 PH	4	4	4	4
	36	E08-251	Screw, #6-32 x 3/4 PH	4	4	4	4
	37	SPK-FMG-013B	Extension Rod	1	1	1	1

PL-FM-3002-0205

May 2003

Issue 1

**Model DG Series Parts Listing
With Decimal Dial (LBF)**

US List Price	Ref. No.	Part No.	Description	DG 200	DG 300	DG 400	DG 500
	38	NC002734-1	Spring, Extension Main	2	-	-	-
		NC002734-2	Spring, Extension Main	-	2	-	-
		NC002734-3	Spring, Extension Main	-	-	2	-
		NC002734-4	Spring, Extension Main	-	-	-	2
	39	SPK-DG-200	Spring, Extension Trim	2	-	-	-
		SPK-DG-300	Spring, Extension Trim	-	2	-	-
		SPK-DG-400	Spring, Extension Trim	-	-	2	-
		SPK-DG-500	Spring, Extension Trim	-	-	-	2
	40	NC002728	Carrying Case Assembly	1	1	1	1
	41	NC002737	Operator's Manual	1	1	1	1
	42	N/A					
	43	N/A					
	44	N/A					
	45	N/A					
	46	N/A					
	47	SPK-FMG-011B	Adapter, Flat	1	1	1	1
	48	SPK-FMG-010B	Adapter, Notch	1	1	1	1
	49	SPK-FMG-009B	Adapter, Point	1	1	1	1
	50	SPK-FMG-008B	Adapter, Chisel Point	1	1	1	1
	51	SPK-FMG-012C	Hook, Stationary	1	1	1	1
	52	N/A					
	53	NC002678	Latch, Pawl Assembly	1	1	1	1
	54	E02-235	Washer, #4 Split Lock	2	2	2	2
	55	E02-236	Washer, #5 Flat	1	1	1	1

Model DG Series Parts Listing With Metric Dial (KGF)

US List Price	Ref. No.	Part No.	Description	DG 100	DG 250
	1	NC002689	Support Plate, Upper	1	1
	2	NC002690	Support Plate, Lower	1	1
	3	NC002681	Frame Support, Upper	1	1
	4	NC002680	Frame Support, Lower	1	1
	5	910-04-001	Ball Bushing	2	2
	6	900-46-010	Retaining Ring	4	4
	7	21047	Screw, #10-32 x 1/2 FH	18	18
	8	7970	Nut, 1/4-20 Hex	2	2
	9	NC002685	Shaft, Main	1	1
	10	NC002684	Calibrator	1	1
	11	NC002663	Spring Support, Medium	2	2
	12	NC002682	Spring Support, Large	2	2
	13	3168	Nut, #6 Hex	2	2
	14	10390	Washer, #6 Lock	2	2
	15	NC002738	Bearing Support Assembly	1	1
	16	NC002716	Bezel, Dial Indicator	1	
	17	N/A			
	18	NC002692	Spring Support, Calibrator	2	2
	19	3127	Screw, Set, #10-32 x 1/4	1	1
	20	N/A			
	21	NC002688	Taper, Pin #2 x 1	1	1
	22	01-90038	Screw, 1/4-28 x 1 SHC	2	2
	23	900-30-021	Washer, 1/4 Flat	2	2
	24	900-08-023	Screw, Set #6-32 x 1/4	2	2
	25	NC002677-21	Dial Indicator Assembly	1	-
		NC002677-22	Dial Indicator Assembly	-	1
	26	NC002674	Spring, Compression	1	1
	27	NC002672	Bracket, Max Capture	1	1
	28	NC002673	Plate, Max Capture	1	1
	29	E08-241	Screw, #4-40 x 3/16 PH	2	2
	30	E08-252	Screw, #4-4 x 5/16 RD	2	2
	31	NC002691	Threaded Bushing	4	4
	32	9766	Washer, Lock 1/4 ID	2	2
	33	NC002730	Housing, Top	1	1
	34	NC002731	Housing, Bottom	1	1
	35	03-90041	Screw, #6-32 x 5/16 PH	4	4
	36	E08-251	Screw, #6-32 x 3/4 PH	4	4
	37	SPK-FMG-013B	Extension Rod	1	1

PL-FM-3002-0205

May 2003

Issue 1

**Model DG Series Parts Listing
With Metric Dial (KGF)**

US List Price	Ref. No.	Part No.	Description	DG 100	DG 250
	38	NC002734-5	Spring, Extension Main	2	-
		NC002734-6	Spring, Extension Main	-	2
	39	SPK-DG-100KG	Spring, Extension Trim	2	-
		SPK-DG-250KG	Spring, Extension Trim	-	2
	40	NC002728	Carrying Case Assembly	1	1
	41	NC002737	Operator's Manual	1	1
	42	N/A			
	43	N/A			
	44	N/A			
	45	N/A			
	46	N/A			
	47	SPK-FMG-011B	Adapter, Flat	1	1
	48	SPK-FMG-010B	Adapter, Notch	1	1
	49	SPK-FMG-009B	Adapter, Point	1	1
	50	SPK-FMG-008B	Adapter, Chisel Point	1	1
	51	SPK-FMG-012C	Hook, Stationary	1	1
	52	N/A			
	53	NC002678	Latch, Pawl Assembly	1	1
	54	E02-235	Washer, #4 Split Lock	2	2
	55	E02-236	Washer, #5 Flat	1	1

Model DG Series Parts Listing With S.I. Dial (Newtons)

US List Price	Ref. No.	Part No.	Description	DG 1000	DG 2500
	1	NC002689	Support Plate, Upper	1	1
	2	NC002690	Support Plate, Lower	1	1
	3	NC002681	Frame Support, Upper	1	1
	4	NC002680	Frame Support, Lower	1	1
	5	910-04-001	Ball Bushing	2	2
	6	900-46-010	Retaining Ring	4	4
	7	21047	Screw, #10-32 x 1/2 FH	18	18
	8	7970	Nut, 1/4-20 Hex	2	2
	9	NC002685	Shaft, Main	1	1
	10	NC002684	Calibrator	1	1
	11	NC002663	Spring Support, Medium	2	2
	12	NC002682	Spring Support, Large	2	2
	13	3168	Nut, #6 Hex	2	2
	14	10390	Washer, #6 Lock	2	2
	15	NC002738	Bearing Support Assembly	1	1
	16	NC002716	Bezel, Dial Indicator	1	1
	17	N/A			
	18	NC002692	Spring Support, Calibrator	2	2
	19	3127	Screw, Set #10-32 x 1/4	1	1
	20	N/A			
	21	NC002688	Taper, Pin #2 x 1	1	1
	22	01-90038	Screw, 1/4-28 x 1 SHC	2	2
	23	900-30-021	Washer, 1/4 Flat	2	2
	24	900-08-023	Screw, Set #6-32 x 1/4	2	2
	25	NC002677-32	Dial Indicator Assembly	1	-
		NC002677-33	Dial Indicator Assembly	-	1
	26	NC002674	Spring, Compression	1	1
	27	NC002672	Bracket, Max Capture	1	1
	28	NC002673	Plate, Max Capture	1	1
	29	E08-241	Screw, #4-40 x 3/16 PH	2	2
	30	E08-252	Screw, #4-4 x 5/16 RD	2	2
	31	NC002691	Threaded Bushing	4	4
	32	9766	Washer, Lock 1/4 ID	2	2
	33	NC002730	Housing, Top	1	1
	34	NC002731	Housing, Bottom	1	1
	35	03-90041	Screw, #6-32 x 5/16 PH	4	4
	36	E08-251	Screw, #6-32 x 3/4 PH	4	4
	37	SPK-FMG-013B	Extension Rod	1	1

PL-FM-3002-0205

May 2003

Issue 1

**Model DG Series Parts Listing
With S. I. Dial (Newtons)**

US List Price	Ref. No.	Part No.	Description	DG 1000	DG 2500
	38	NC002734-5	Spring, Extension Main	2	-
		NC002734-6	Spring, Extension Main	-	2
	39	SPK-DG-1000N	Spring, Extension Trim	2	-
		SPK-DG-2500N	Spring, Extension Trim	-	2
	40	NC002728	Carrying Case Assembly	1	1
	41	NC002737	Operator's Manual	1	1
	42	N/A			
	43	N/A			
	44	N/A			
	45	N/A			
	46	N/A			
	47	SPK-FMG-011B	Adapter, Flat	1	1
	48	SPK-FMG-010B	Adapter, Notch	1	1
	49	SPK-FMG-009B	Adapter, Point	1	1
	50	SPK-FMG-008B	Adapter, Chisel Point	1	1
	51	SPK-FMG-012C	Hook, Stationary	1	1
	52	N/A			
	53	NC002678	Latch, Pawl Assembly	1	1
	54	E02-235	Washer, #4 Split Lock	2	2
	55	E02-236	Washer, #5 Flat	1	1