

NEXYGEN™ MT v4.5

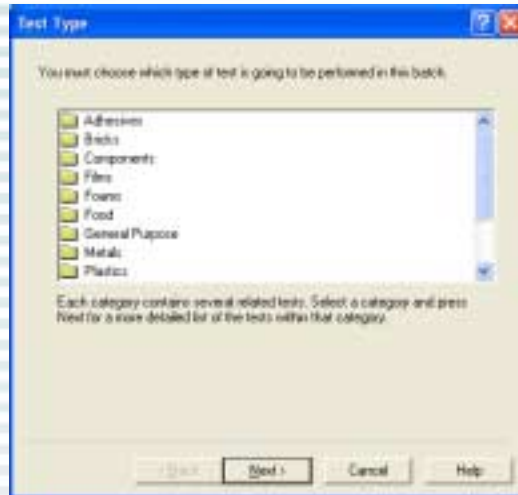
Materials Testing Software

MATERIALS TESTING SOFTWARE

NEXYGEN MT software provides a virtual testing laboratory. The software offers a full compliment of testing categories with multiple test types within each category complying with industry and international testing standards. Setups remain easy to use and users can fully configure a test in a logical, intuitive, step-by-step manner. Like the other NEXYGEN packages, NEXYGEN MT software presents test results in tabular and graphical formats.

TEST SETUP FEATURES

- Interfaces directly to your LLOYD INSTRUMENTS Universal Test Machine.
- Library of predefined Tests and Testing Categories.



(a) Library of predefined Test Categories

- Customise data formats and setup preferences for tables, graphics, fonts etc.
- Ability to move columns and rows and to rename headings.



(b) Renaming Headings

SPECIFICATION
SS-MT-1603-0702
July 2002

www.ametek.com
www.lloyd-instruments.co.uk
www.chatillon.com

- Configure the test using a standard test setup template, which is pre-formatted for each test type.
- Specify and select from a menu, the attributes that are important for a particular test.
- "Extra Results" can be established before the test is performed. Displayed as text, yes/no or numerical values.
- Supports Mitutoyo Digimatic and other gauges for sample measurement.

- “Quick Starter” allows the user to start and complete a test with only one click of the mouse or by depressing the space bar.

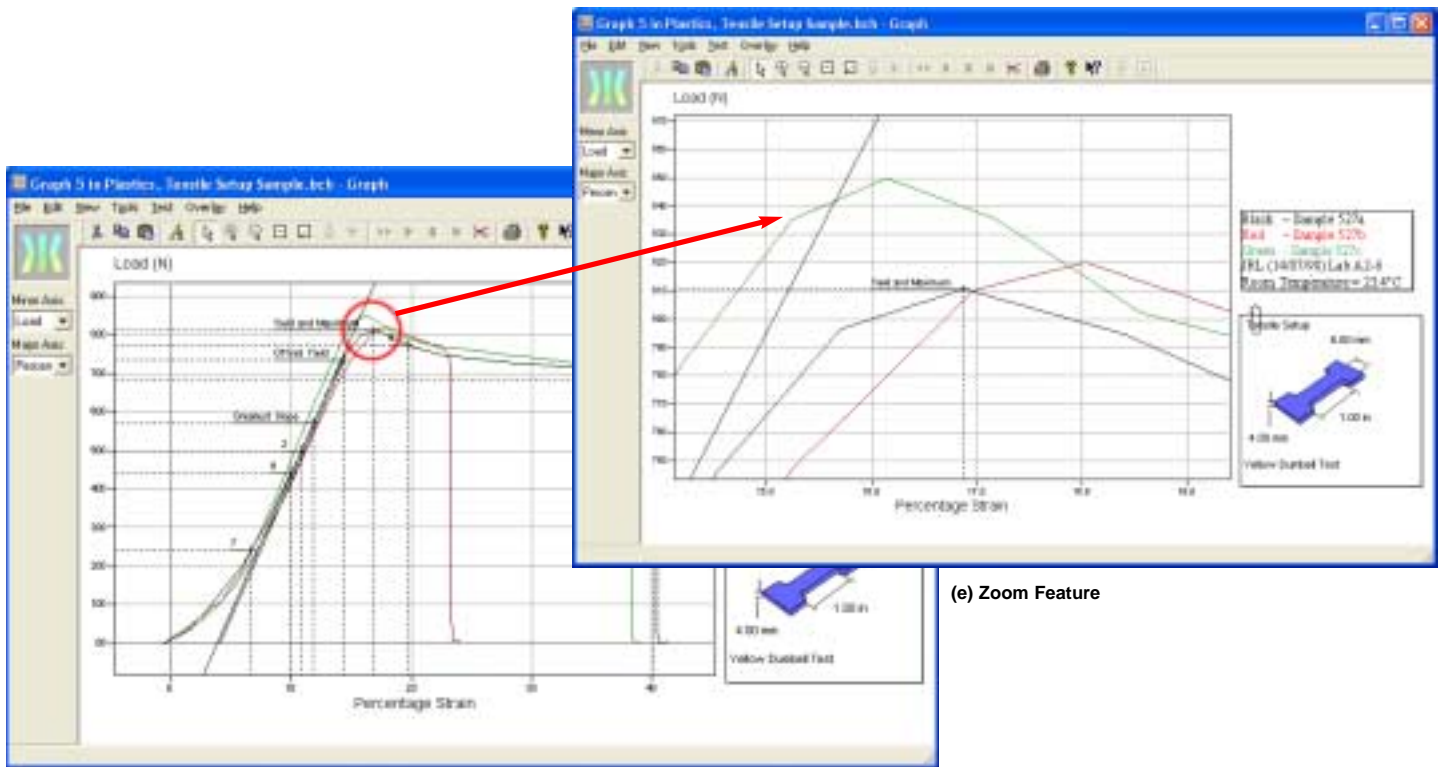
Date	Time	User	Sample P...	Sample Information	Sample Reference	Width	Test Type	Preload	Propagation
27	010602	18:13:31	DANLO	True	ABC123	1270.0	100° Peel	93.000 N	100.00 mm
28	010602	18:13:31	DANLO	True	ABC123	1270.0	100° Peel	93.000 N	100.00 mm
68	010602	18:13:31	DANLO	True	ABC123	1270.0	100° Peel	93.000 N	100.00 mm
79	010602	18:13:31	DANLO	True	ABC123	1270.0	100° Peel	93.000 N	100.00 mm
90	010602	18:13:31	DANLO	True	ABC123	1270.0	100° Peel	93.000 N	100.00 mm
96	010602	18:13:31	DANLO	True	ABC123	1270.0	100° Peel	93.000 N	100.00 mm
103	010602	18:13:31	DANLO	True	ABC123	1270.0	100° Peel	93.000 N	100.00 mm
104	010602	18:13:31	DANLO	True	ABC123	1270.0	100° Peel	93.000 N	100.00 mm
107	010602	18:13:31	DANLO	True	ABC123	1270.0	100° Peel	93.000 N	100.00 mm
108	010602	18:13:31	DANLO	True	ABC123	1270.0	100° Peel	93.000 N	100.00 mm
111	010602	18:13:31	DANLO	True	ABC123	1270.0	100° Peel	93.000 N	100.00 mm
112	010602	18:13:31	DANLO	True	ABC123	1270.0	100° Peel	93.000 N	100.00 mm
115	010602	18:13:31	DANLO	True	ABC123	1270.0	100° Peel	93.000 N	100.00 mm
116	010602	18:13:31	DANLO	True	ABC123	1270.0	100° Peel	93.000 N	100.00 mm
119	010602	18:13:31	DANLO	True	ABC123	1270.0	100° Peel	93.000 N	100.00 mm
120	010602	18:13:31	DANLO	True	ABC123	1270.0	100° Peel	93.000 N	100.00 mm
121	010602	18:13:31	DANLO	True	ABC123	1270.0	100° Peel	93.000 N	100.00 mm
124	010602	18:13:31	DANLO	True	ABC123	1270.0	100° Peel	93.000 N	100.00 mm
127	050702	11:33:49	Myke	True	ABC123	1270.0	100° Peel	93.000 N	100.00 mm
129	060702	11:37:07	Myke	True	ABC123	1270.0	100° Peel	93.000 N	100.00 mm

(c) Quick Starter

- Automatically print results in a pre-configured report format after each test.

RESULTS PRESENTATION FEATURES

- Provides graphical presentation of test results.
- Markers can be used to denote specific points.
- Graphical overlays provide a quick and easy comparison of results.
- Magnify any portion of the graph to obtain more detailed information.

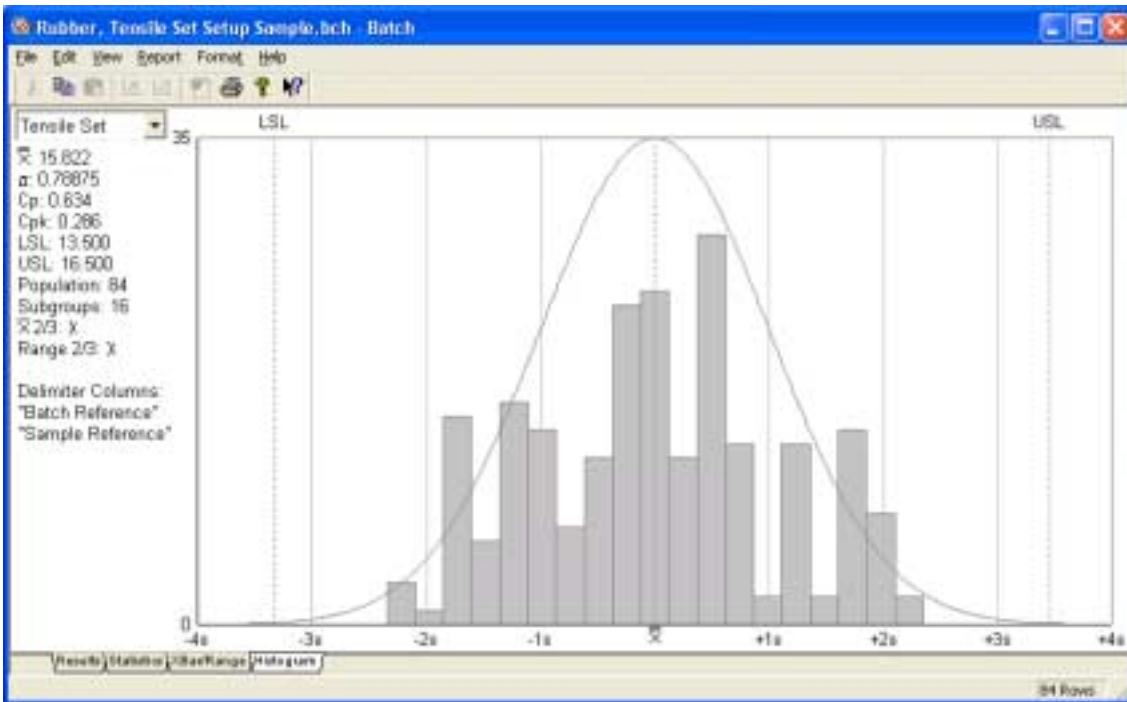


(d) Graphical Overlay

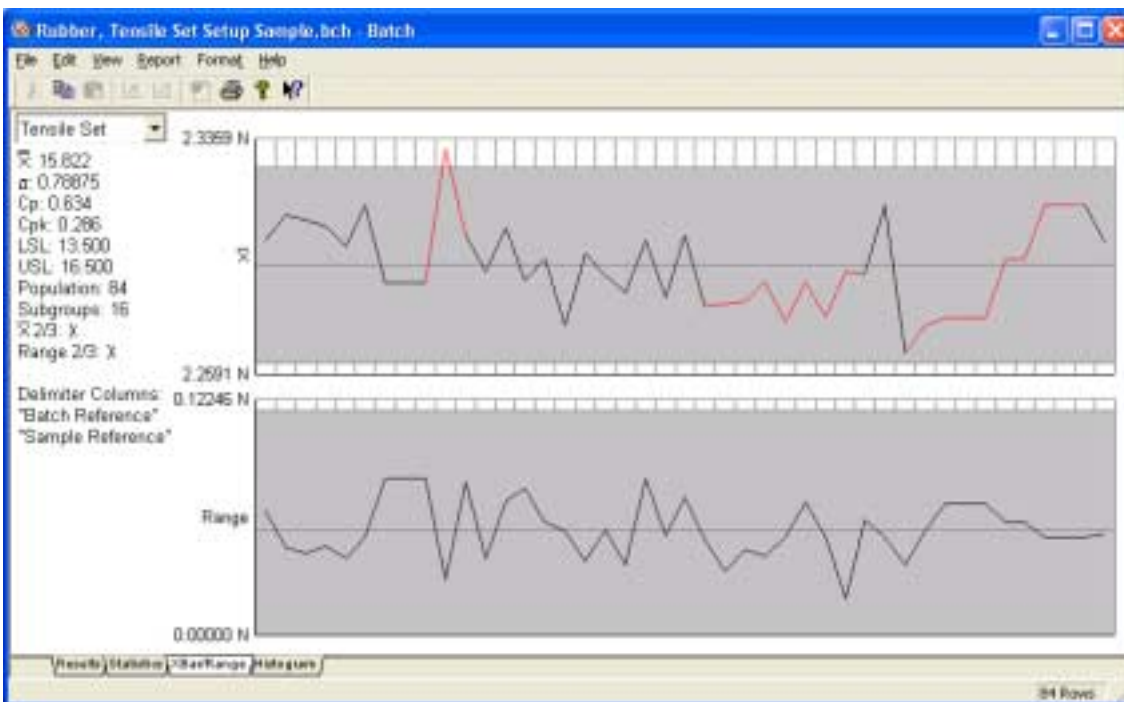
(e) Zoom Feature

- Select and reposition the trace within its axes or transfer the trace to a report.
- Establish a trace as your “reference” against which all other tests for a batch can be compared.
- Columns containing numerical data can be configured for Pass/Fail. If data is recorded outside a configured limit, the row is highlighted for easy identification.
- “Show Pass/Fail” option allows the user to enable or disable the feature, highlighting a pass or fail in red (fail) or green (pass).

- Easy SPC functionality without the need for SPC knowledge
- XBar/Range and Histogram functions for advanced statistical analysis.
- Mathematical calculations including mean, Range, Standard Deviation, Capability Index (Cp) and Cpk.



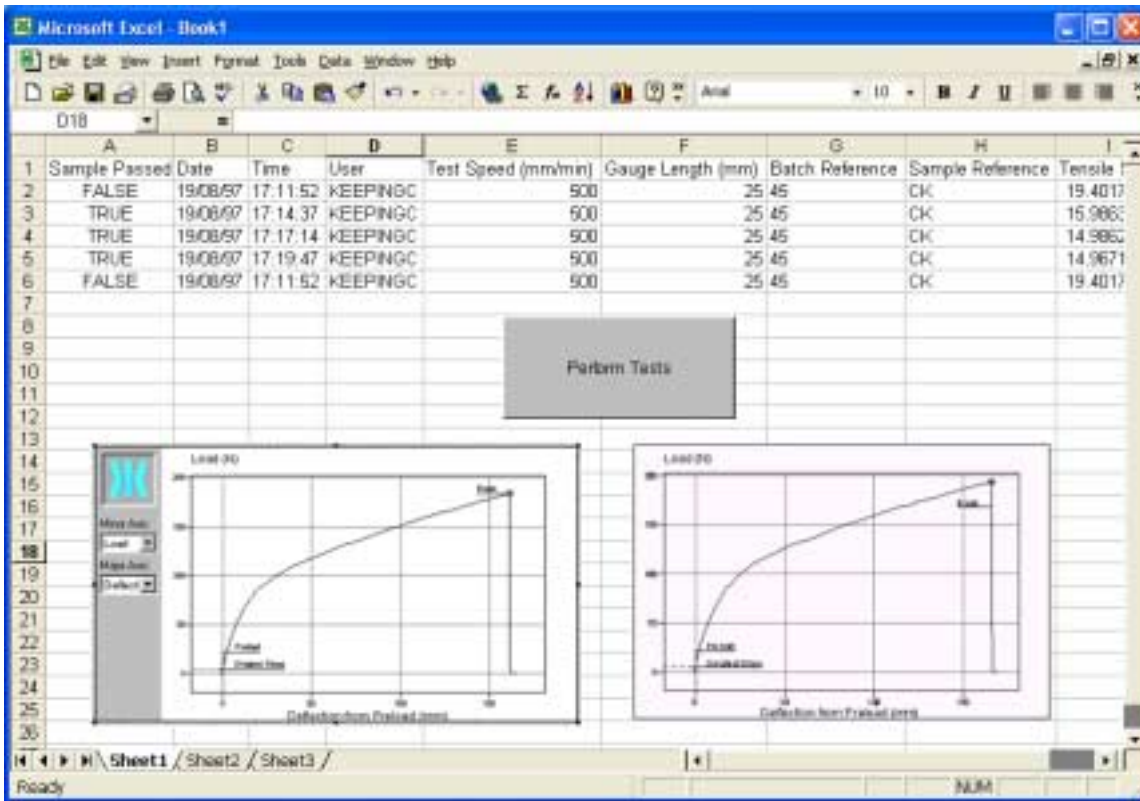
(f) Histogram



(g) XBar/Range

WINDOWS® INTEGRATION

- Create reports or integrate data easily using Microsoft Word®, PowerPoint®, Outlook®, Excel® or Access®.
- Design Word templates so that data from NEXYGEN™ populates the template, creating customised reports.
- Report generation can be prompted by the user or by the software based on an event.
- Seamless OLE2 integration with Microsoft® programs enables rapid, easy exporting of information and data exchange across to other applications.



(h) Driving NEXYGEN™ through Excel®

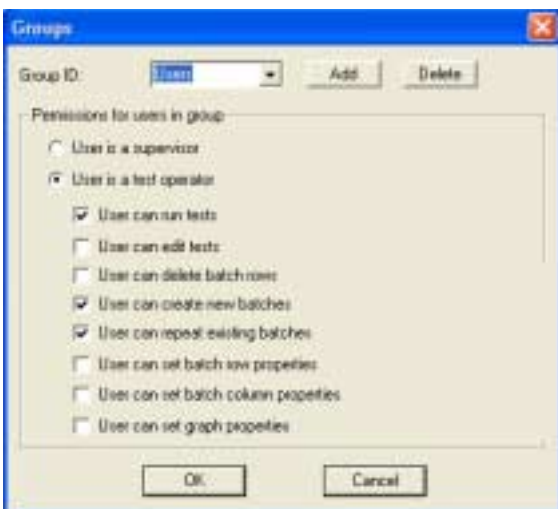
ADVANCED TESTING

Fully customise your NEXYGEN tests using Ondio™ application builder software. See Spec Sheet SS-MT-1604-0702 for more details.

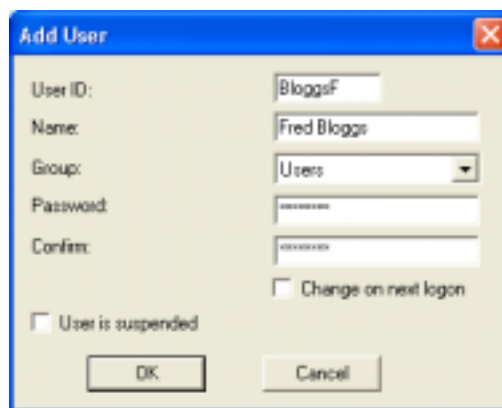
SECURITY AND AUDIT TRAIL FUNCTION

NEXYGEN™ MT v4.5 provides comprehensive security and audit features. This feature is not only critical to the food, pharmaceutical, medical and cosmetic industries, but also provides increased security useful for any testing application.

For further details on how NEXYGEN address these issues please see spec sheet SS-MT-1605-0702.



(i) Setting User Groups



(j) Adding a User

dunlopm - NEXYGEN Administration

File Edit View Help

From: 24/06/2002 To: 28/06/2002 User: Refresh

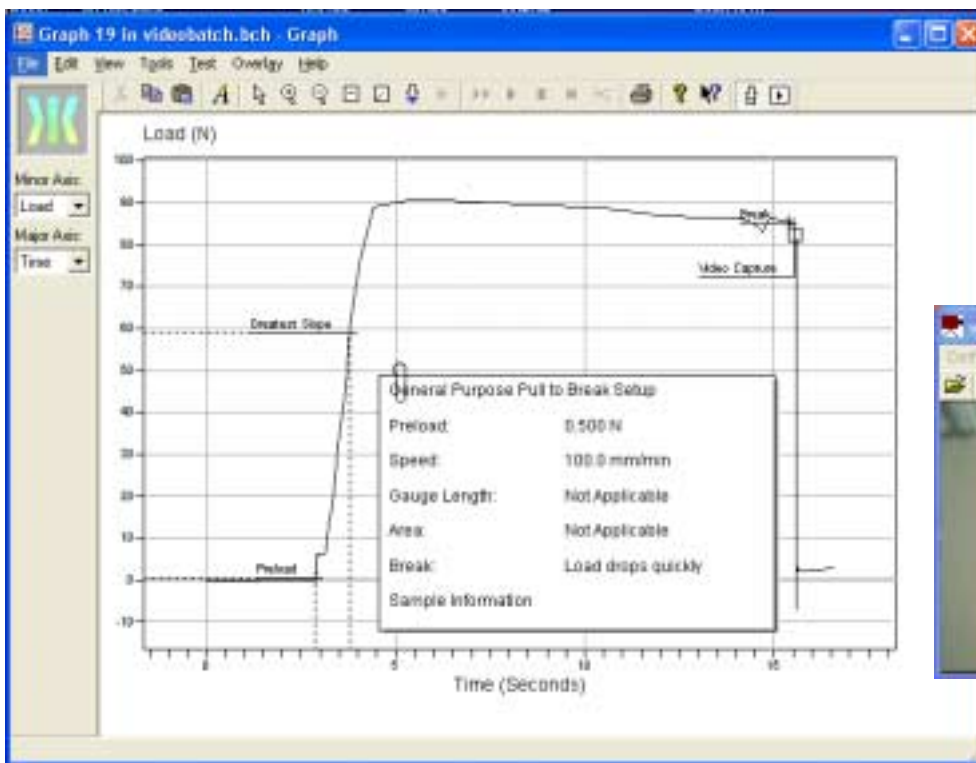
Date/Time	User	Description
28/06/2002 15:58:49	dunlopm	Logged out
28/06/2002 15:58:44	dunlopm	Saving changes to batch: C:\Documents and Settings\DUNLOPM\Desktop\Regression 4.5\0646.bch
28/06/2002 15:55:03	dunlopm	Saving changes to batch: C:\Documents and Settings\DUNLOPM\Desktop\Regression 4.5\0646.bch
28/06/2002 15:54:15	dunlopm	Saving changes to batch: C:\Documents and Settings\DUNLOPM\Desktop\Regression 4.5\0644.bch
28/06/2002 15:52:26	dunlopm	Saving changes to batch: C:\Documents and Settings\DUNLOPM\Desktop\Regression 4.5\0644.bch
28/06/2002 15:52:10	dunlopm	Saving changes to batch: C:\Documents and Settings\DUNLOPM\Desktop\Regression 4.5\0641.bch
28/06/2002 15:48:49	dunlopm	Saving changes to batch: C:\Documents and Settings\DUNLOPM\Desktop\Regression 4.5\0641.bch
28/06/2002 15:48:28	dunlopm	Saving changes to batch: C:\Documents and Settings\DUNLOPM\Desktop\Regression 4.5\0657.bch
28/06/2002 15:32:07	dunlopm	Saving changes to batch: C:\Documents and Settings\DUNLOPM\Desktop\Regression 4.5\0657.bch
28/06/2002 15:31:46	dunlopm	Logged in
28/06/2002 11:04:22	dunlopm	Logged out
28/06/2002 11:04:06	dunlopm	Logged in
28/06/2002 11:03:49	dunlopm	Logged out
28/06/2002 11:03:26	dunlopm	Logged in
28/06/2002 11:03:07	dunlopm	Logged out

For Help, press F1

(k) Security Audit Trail

VIDEO CAPTURE AND PLAYBACK

Tests can be recorded live on video and played back immediately, allowing simultaneous analysis of the test. During test analysis, the graph window and the video window open on screen at the same time. As the video of the test file is played back a marker on the graph follows the progress in real time. It is possible to move the marker manually to analyse more closely what is happening during the test or at a chosen event on the video clip/graph as both are synchronised. This feature proves particularly useful for research, education and training industries.



(l) Video Capture and Playback

SERVO PNEUMATIC AND HYDRAULIC MACHINE CAPABILITY

NEXYGEN™ MT v4.5 provides static testing capability for the SI Plan Servo Pneumatic and Hydraulic Systems.

SUPPORT FOR NEW NON-CONTACTING INFRARED EXTENSOMETER (IR750)

By selecting the appropriate option in the EZ/Plus Series console, provided with NEXYGEN, the software and the extensometer are able to communicate. For use with EZ and Plus Series Machines only.

For more information on the IR750 please see spec sheet SS-MT-6604-0702.

MACHINE STIFFNESS COMPENSATION

Stiffness compensation is available to EZ and *Plus* Series machines for testing rigid materials such as glass and metals. As sample movement is very small, any slight movement in the grips, loadcell or test frame may affect the test results. The machine automatically compensates the extension readings from one of 10 combinations depending on the grips or loadcell used.

LabVIEW - NEXYGEN INTERFACE DRIVER

This new software driver, provided with NEXYGEN™ MT v4.5, controls LLOYD INSTRUMENTS and CHATILLON testing machines via the measurement and automation software package LabVIEW™, developed by National Instruments.

For more details on the LabVIEW - NEXYGEN Interface Driver please see spec sheet SS-MT-1600-0202.

REDUCING DATA RATES FOR LONG DURATION TESTING

An option is available within NEXYGEN™ MT v4.5 to reduce the data rate, enabling long tests to be performed successfully without the need to take up a large storage space.

INTERFACES

For increased flexibility, interfaces for Mitutoyo gauges, Mettler Balances and Heidenhain Gauges are included:

- Heidenhain Gauges
- Mitutoyo Digimatic 1
- Mitutoyo DMX1
- Mitutoyo IBRit-md1
- Mitutoyo Input Tool
- Mettler Balances

GAUGE ONLY TESTING FOR CHATILLON GAUGE USERS

NEXYGEN™ MT v4.5 fully supports CHATILLON Force Gauge Software by including NEXYGEN GAUGE software capability.

For more details on NEXYGEN GAUGE please see spec sheet SS-MT-1601-1101.

ENHANCED INTEGRATED HTML HELP SYSTEM

NEXYGEN™ MT v4.5 boasts an extremely useful search and help facility based on the Windows® HTML Help System.



(m) HTML Help System

BATCH TEST CATEGORIES INCLUDED

- General Purpose
- Adhesives Testing
- Bricks Testing
- Components Testing
- Films Testing
- Foam Testing
- Food Testing
- Metals Testing
- Plastics Testing
- Rubber Testing
- Springs Testing
- Textiles Testing

STANDARD BATCH TESTS INCLUDED

- Pull to break
- Pull to force limit
- Pull with yields
- Compress to rupture
- Compress to force limit
- Compress with yields
- Cycling
- Creep
- Relaxation
- Tearing and peeling
- Flexural (3- and 4-point bend)
- Snap on, snap off
- Insertion and extraction
- Friction
- Hardness
- Adhesion

A variety of batch tests are included in each test category that comply with International Standards.

SYSTEM REQUIREMENTS (MINIMUM)

- Pentium 2® Processor, 400MHz
- 128MB RAM
- 250MB Hard Disk Space
- 1 Free COM Port, with 16550 UART
- CD ROM Drive (For Installation)
- Monitor, with resolution 1204 x 768 or higher
- Microsoft Office recommended

Ordering Information

Order No.	Description
40/0658	NEXYGEN™ MT Application Software, Version 4.2, Single License
40/0658/5	NEXYGEN™ MT Application Software, Version 4.2, Five Seat License
40/0658/10	NEXYGEN™ MT Application Software, Version 4.2, Ten Seat License



TEST AND CALIBRATION INSTRUMENTS

WINDOWS, EXCEL, ACCESS AND POWERPOINT are registered trademarks of Microsoft Corporation

UK
Lloyd Instruments Ltd
Forum House
12 Barnes Wallis Road
Segensworth East, Fareham
Hampshire, PO15 5TT
UK
Tel: +44 (0)1489 486 399
Fax: +44 (0)1489 885 118

America
AMETEK TCI Division
8600 Somerset Drive
Largo
Florida 33773
USA
Tel: +1 (727) 536 7831
Fax: +1(727) 539 6882

Far East
Lloyd Instruments
Far East Representative Office
No7 Sherwood Place
Alexander Heights
6064 Perth
WESTERN AUSTRALIA
Tel: +61 8 9343 5725
Fax: +61 8 9343 5723

France
Lloyd Instruments SA
3 avenue des Coudriers
Zone d'activite de l'observatoire
78180 Montigny-Le-Bretonneux
FRANCE
Tel: +33 (1) 30 57 47 74
Fax: +33 (1) 30 57 50 33

Germany
AMETEK Precision Instruments
Europe GmbH
Rudolf-Diesel-Straße 16
D-40670 Meerbusch
GERMANY
Tel: +49 (0)2159 9136-70
Fax: +49 (0)2159 9136-80

email: general@lloyd-instruments.co.uk
www.lloyd-instruments.co.uk

Information within this document is subject to change without notice.

**ISO 9001
Manufacturer**